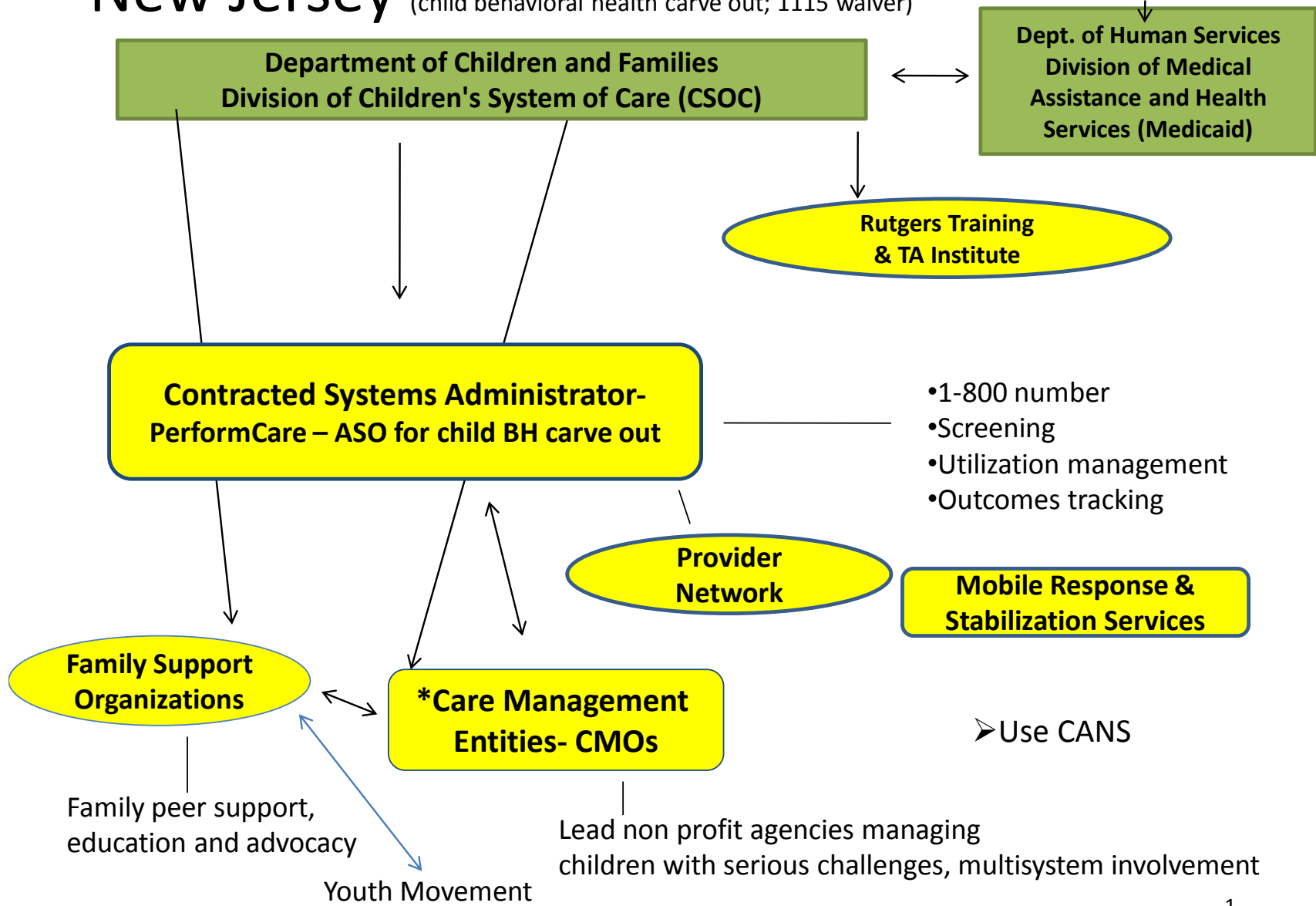


New Jersey (child behavioral health carve out; 1115 waiver)

BH, CW, MA \$\$ - Single Payor



South Carolina (PH/BH integrated managed care as of 7/1/2016 and moving to very small 1915 (c))

Current



Migrating to

DMH and
DAODAS non
Medicaid
services

Targeted Case
Management FFS*

5 integrated BH
MCOs

All foster
children in
single MCO

Addition of 1915 c waiver to
be managed by SCDHHS with
CME /Fidelity Wraparound,
EBPs, Peer Support, Respite

*Fidelity Wraparound provided by
dedicated state agency functioning
as a Care Management Entity
(CME)

Louisiana

(PH/BH risk-based integrated managed care, with 1915 (b)(c) waivers for children/youth with SED in a non-risk behavioral health carve out)

Louisiana Department of Health
The Bureau of Health Services Financing and
The Office of Behavioral Health

Current



Migrating to

BHO contract

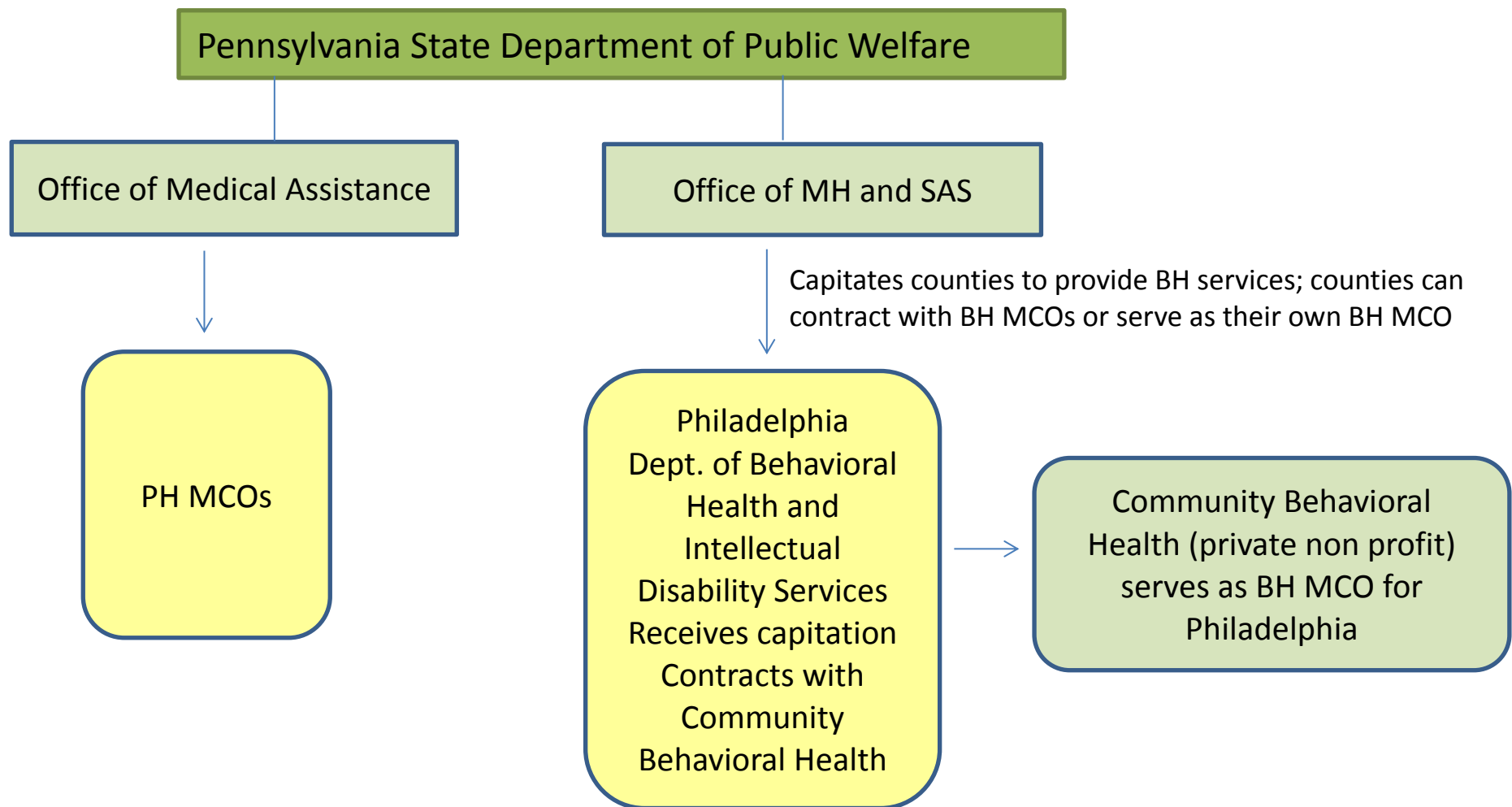
Child/youth
with SED
BH carve out*
1915b/c

5 integrated
BH/PH MCOs

Integrated BH/PH
MCOs with child/youth
1915b/c carved in to
one or more MCOs

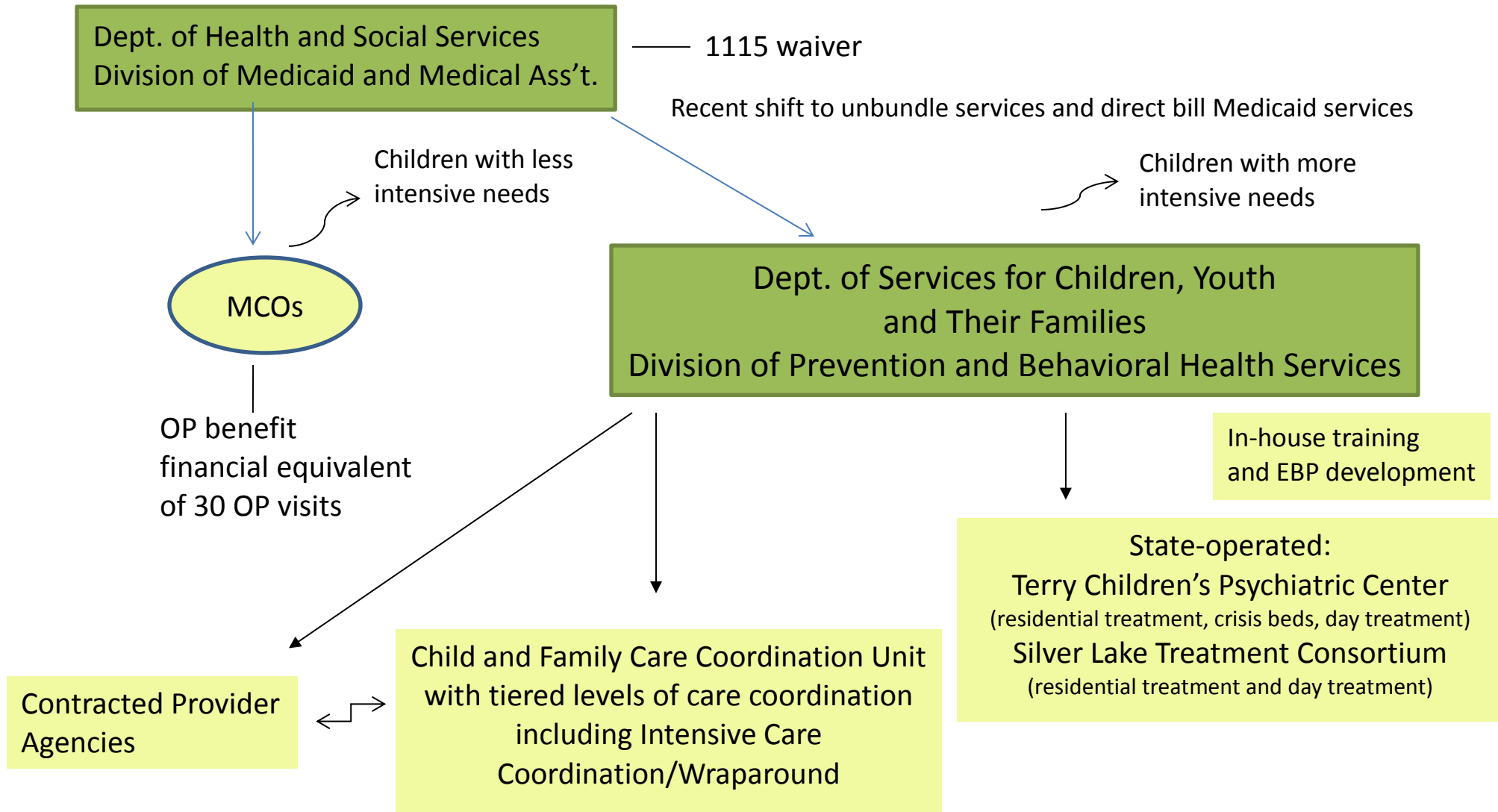
*Incorporates regional Care Management Entities with Intensive Care Coordination/Wraparound, Peer Support, intensive home and community based services

Pennsylvania (County-based BH managed care carve out through 1915 (b))



Delaware

(MCOs manage PH and 30 office-visit BH benefit; child BH division acts as its own MCO to manage everything else)



North Carolina (Adult and child behavioral health carve out migrating to 1115 PH/BH integrated managed care)

North Carolina Health and Human Services
Division of Medical Assistance and
Division of Mental Health, Developmental Disabilities and Substance Abuse

Current

Migrating to

Migrating to

PCCMs and
Community
Care of NC
for PH care

and

Adult/child BH
carve out
1915b/c
7 LME-MCOs
(former local
BH Authorities)

4LME-
MCOs

1115 Integrated PH/BH via
commercial managed care
plans and provider-led entities

- Local Community Collaboratives
- ICC/Wrap and Peer Support Pilots

SOC Coordinators

New Mexico (Integrated managed care through 1115 waiver in 2014)

New Mexico Behavioral Health Collaborative

Department of Human Services

Medical Assistance Division
Centennial Care

NM Children, Youth and Families
Department (CYFD)
-Serves as child/youth
behavioral health authority

4 integrated MCOs, with
- 1 MCO piloting small
Intensive Care
Coordination/Wraparound
demo for child welfare
population

MCO and CYFD collaborating on
Intensive Care
Coordination/Wraparound pilot

Ohio

(Migrating to integrated BH/PH MCO model in 2018; currently, BH is not in managed care; is provided through FFS Medicaid. Ohio uses several authorities to cover different populations, including 1115, 1932(a) and 1915 (b). State now responsible for match where had been counties)

